

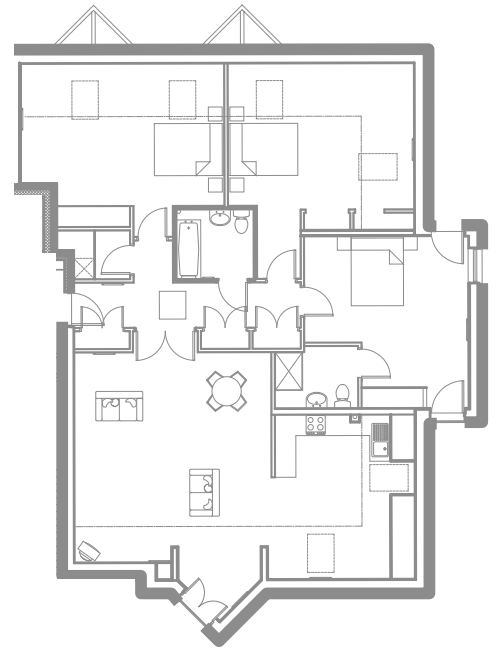


# Portland Court Troon

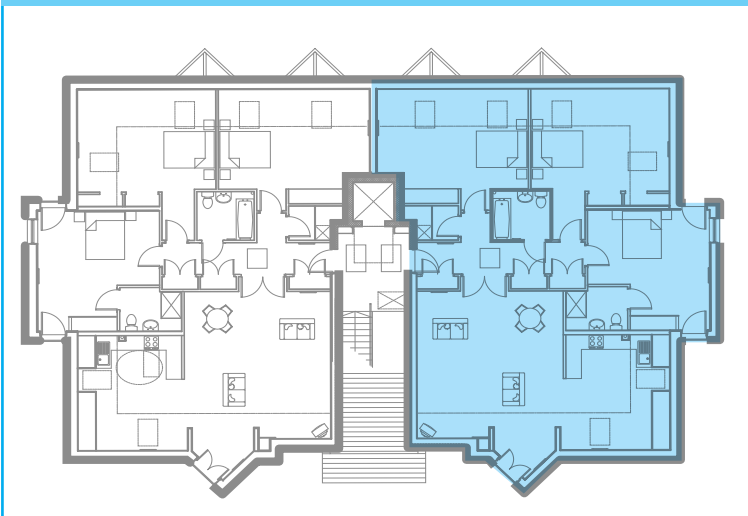
phase two

## Block C | Penthouse level | Apt 10

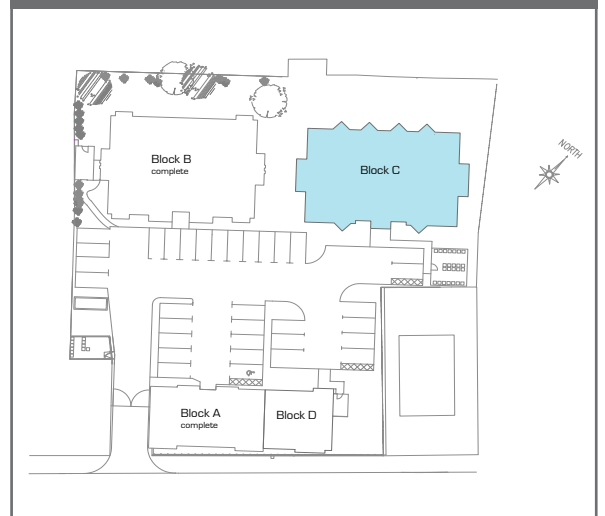
Lounge (excl Bay Window)	6.05m x 5.67m	19' 10" x 18' 7"
Kitchen	4.74m x 4.24m	15' 6" x 13' 11"
Bedroom 1	4.95m x 4.73m	16' 3" x 15' 6"
En-suite	2.40m x 1.62m	7' 10" x 5' 4"
Bedroom 2	4.81m x 5.37m	15' 9" x 17' 7"
Bedroom 3	4.71m x 5.81m	15' 5" x 19' 1"
Bathroom	2.22m x 2.00m	7' 3" x 6' 7"
Utility/Boiler	1.40m x 2.10m	4' 7" x 6' 11"



### Penthouse Level



### Site layout



[www.rockwoodhomes.co.uk](http://www.rockwoodhomes.co.uk)

Every effort has been made to ensure these floorplans and dimensions are to scale and correct, however their accuracy cannot be guaranteed and they do not form part of any contract

For further information on Portland Court, please contact 01294 272640