

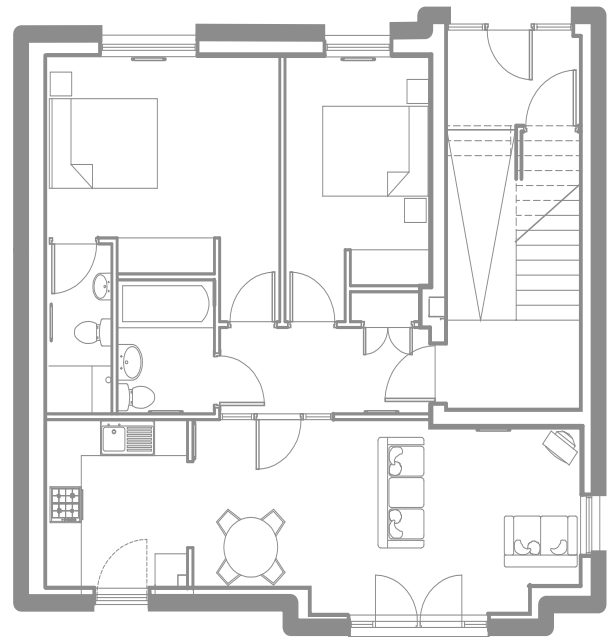


Portland Court Troon

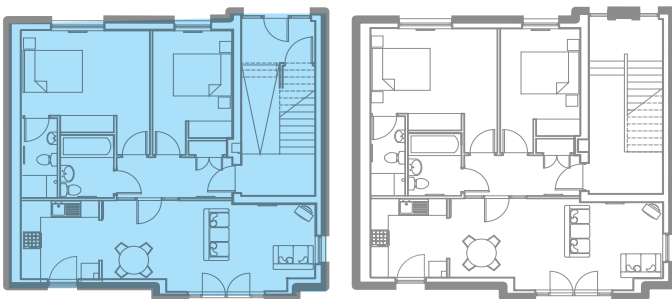
phase two

Block D | Garden level | Apt 11

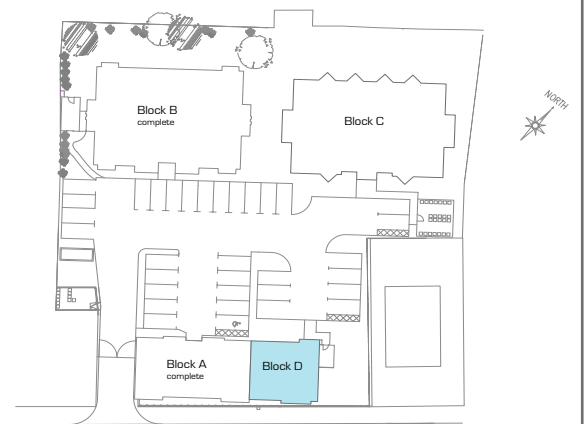
Lounge	7.19 x 3.15m	23' 7" x 10' 4"
Kitchen	2.55 x 2.70m	8' 4" x 8' 10"
Bedroom 1	4.44 x 4.26m	14' 7" x 14' 0"
En-suite	2.84 x 1.20m	9' 4" x 4' 0"
Bedroom 2	3.84 x 2.68m	12' 7" x 8' 10"
Bathroom	2.24 x 1.80m	7' 3" x 5' 11"



Block D



Site layout



www.rockwoodhomes.co.uk

Every effort has been made to ensure these floorplans and dimensions are to scale and correct, however their accuracy cannot be guaranteed and they do not form part of any contract

For further information on Portland Court, please contact 01294 272640