

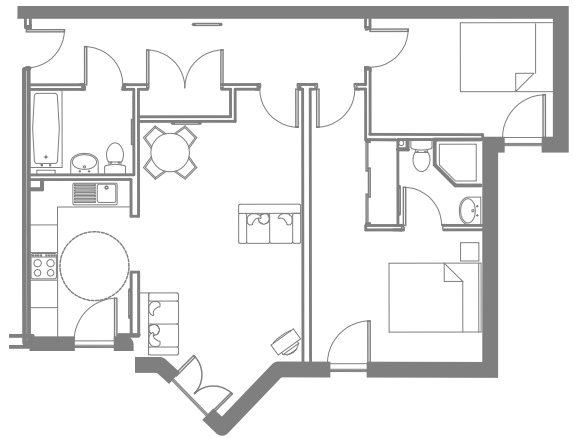


Portland Court Troon

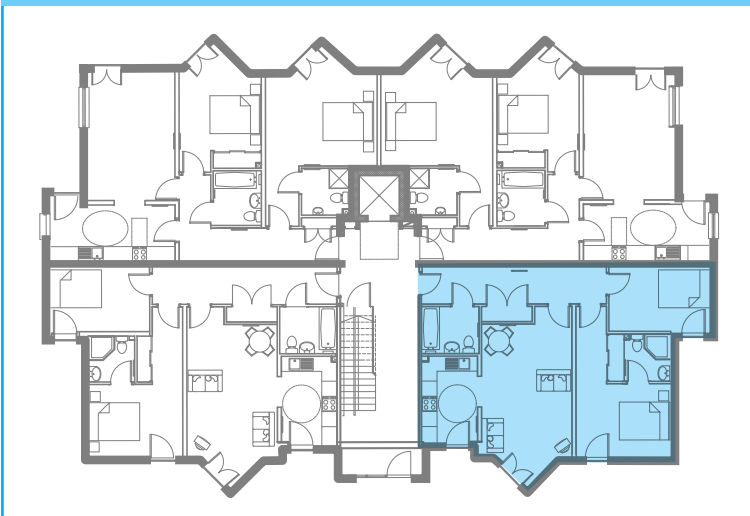
phase two

Block C | Garden level | Apt 4

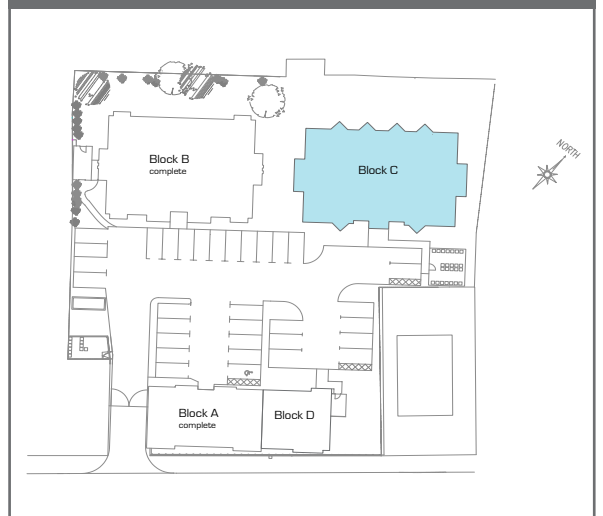
Lounge (excl Bay Window)	5.84 x 3.56m	19' 2" x 11' 8"
Kitchen	3.39 x 2.20m	11' 1" x 7' 3"
Bedroom 1	4.74 x 3.70m	15' 6" x 12' 2"
En-suite	1.80 x 1.86m	5' 11" x 6' 1"
Bedroom 2	3.95 x 2.37m	11" x 7' 9"
Bathroom	2.26 x 1.86m	7' 5" x 6' 1"



Garden level



Site layout



www.rockwoodhomes.co.uk

Every effort has been made to ensure these floorplans and dimensions are to scale and correct, however their accuracy cannot be guaranteed and they do not form part of any contract

For further information on Portland Court, please contact 01294 272640