

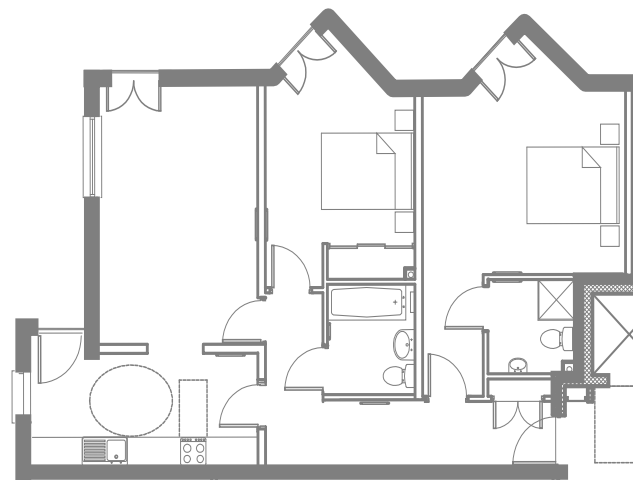


# Portland Court Troon

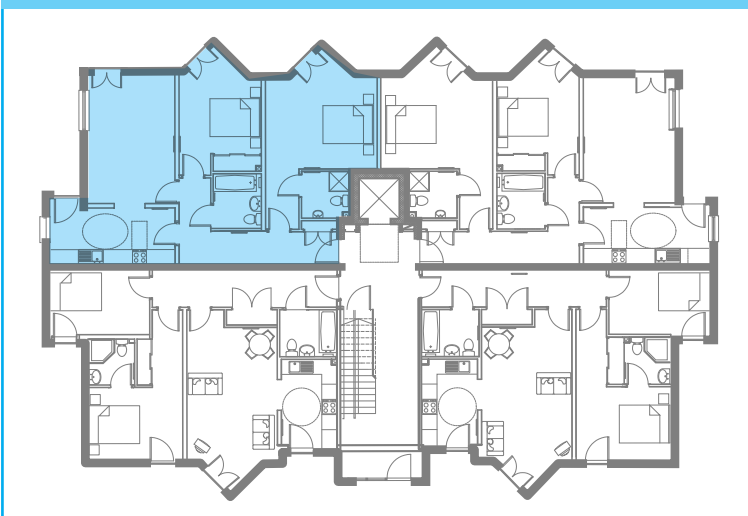
phase two

## Block C | Garden level | Apt 2

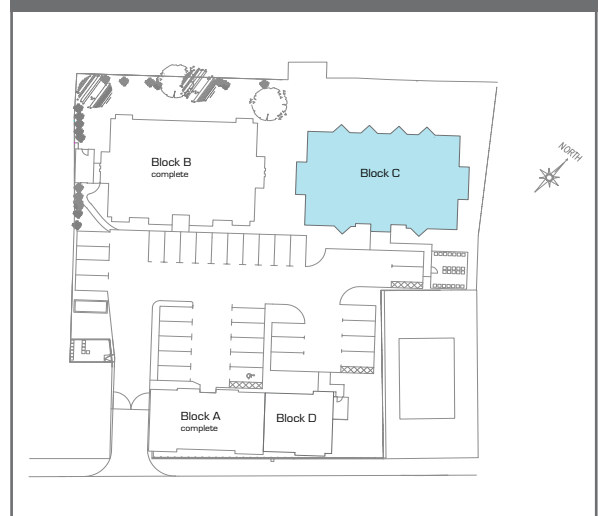
Lounge	4.82 x 3.40m	15' 9" x 11' 1"
Kitchen	4.95 x 2.23 m	16' 3" x 7' 3"
Bedroom 1 (excl Bay Window)	5.84 x 4.30m	19' 2" x 14' 1"
En-suite	1.90 x 1.90m	6' 3" x 6' 3"
Bedroom 2 (excl Bay Window)	3.54 x 3.25m	11' 7" x 10' 8"
Bathroom	2.20 x 1.90m	7' 3" x 6' 3"



### Garden level



### Site layout



[www.rockwoodhomes.co.uk](http://www.rockwoodhomes.co.uk)

Every effort has been made to ensure these floorplans and dimensions are to scale and correct, however their accuracy cannot be guaranteed and they do not form part of any contract

For further information on Portland Court, please contact 01294 272640